

## INDEX

SHEET NO.	SUBJECT
1	Concrete Bridge Railing Transition Index and General Notes
2	Concrete Bridge Railing Transition, TPF-1 Plan and Elevation
3	Concrete Bridge Railing Transition, TPF-1 Sections and Reinforcing Bar Bending Details
4	Concrete Bridge Railing Transition, TPS-1 Plan and Elevation
5	Concrete Bridge Railing Transition, TPS-1 Sections and Reinforcing Bar Bending Details

### GENERAL NOTES:

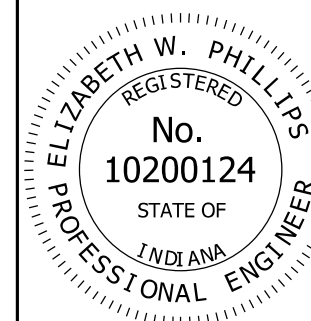
- All reinforcing bars designated E shall be epoxy coated.



INDIANA DEPARTMENT OF TRANSPORTATION

CONCRETE BRIDGE RAILING TRANSITION  
INDEX AND GENERAL NOTES

SEPTEMBER 2019

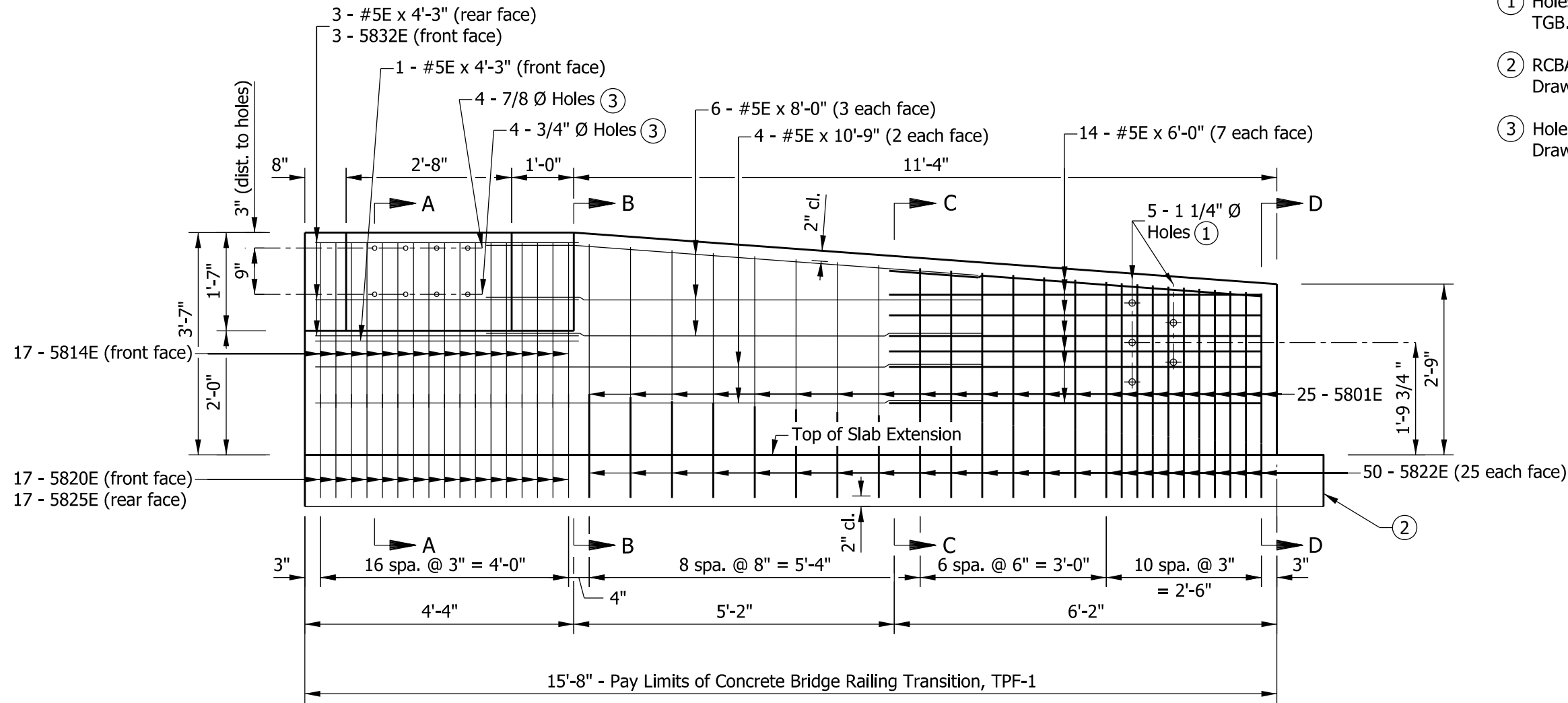
STANDARD DRAWING NO. E 706-TTPP-01



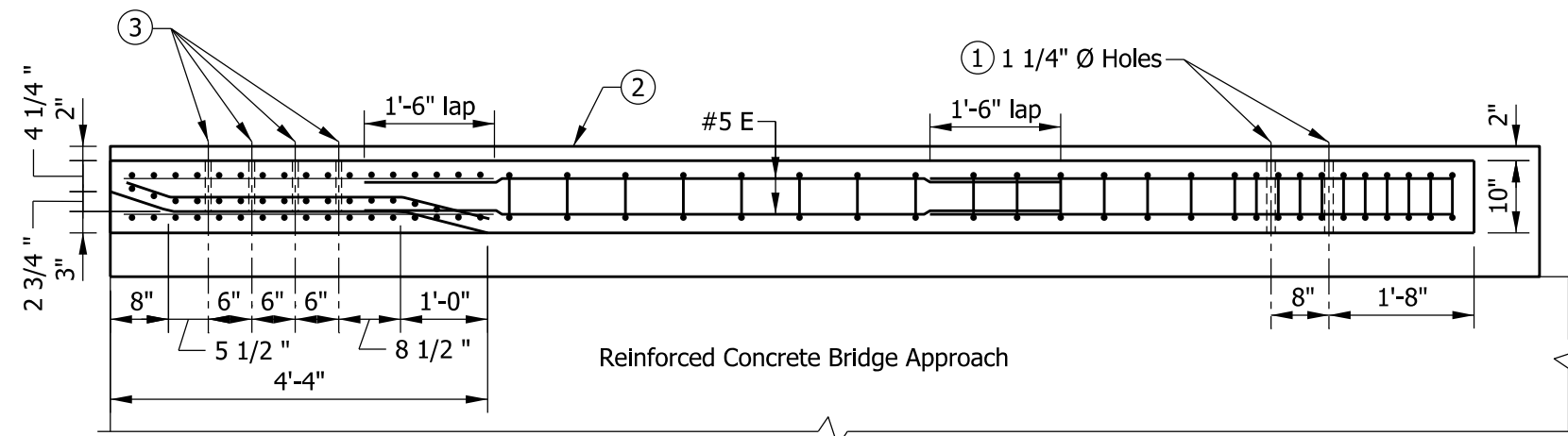
	5/2/2019
DESIGN STANDARDS ENGINEER	DATE
	6/5/2019
CHIEF ENGINEER	DATE

**NOTES:**

- ① Holes for attachment of guardrail transition, MGS transition, or type TGB. See Standard Drawing E 706-CBRT-04 for details.
- ② RCBA extension for bridge railing transition type TPF-1. See Standard Drawing E 609-TBAE-01 for details.
- ③ Holes for attachment of steel bridge railing type PF-1. See Standard Drawing E 706-BRPP-02 for details.



**ELEVATION**



**PLAN**

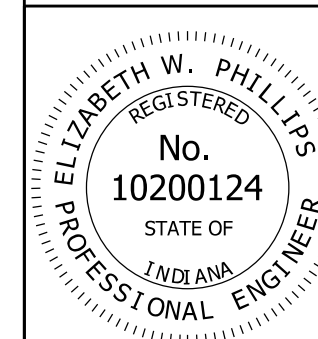
BILL OF MATERIALS			
Quantities are for one concrete bridge railing transition type TPF-1.			
EPOXY COATED REINFORCING BARS			
MARK OR SIZE	NO. OF BARS	LENGTH	WEIGHT
5801E	25	5'-4"	
5814E	17	3'-0"	
5820E	17	3'-1"	
5822E	50	3'-7"	
5825E	17	4'-8"	
5832E	3	4'-3"	
#5E	4	10'-9"	
#5E	6	8'-0"	
#5E	14	6'-0"	
#5E	4	4'-3"	
Total Epoxy Coated Reinforcing Bars			730 LBS
MISCELLANEOUS			
Concrete, Class C			1.5 CYS
Surface Seal			119 SFT



**INDIANA DEPARTMENT OF TRANSPORTATION**

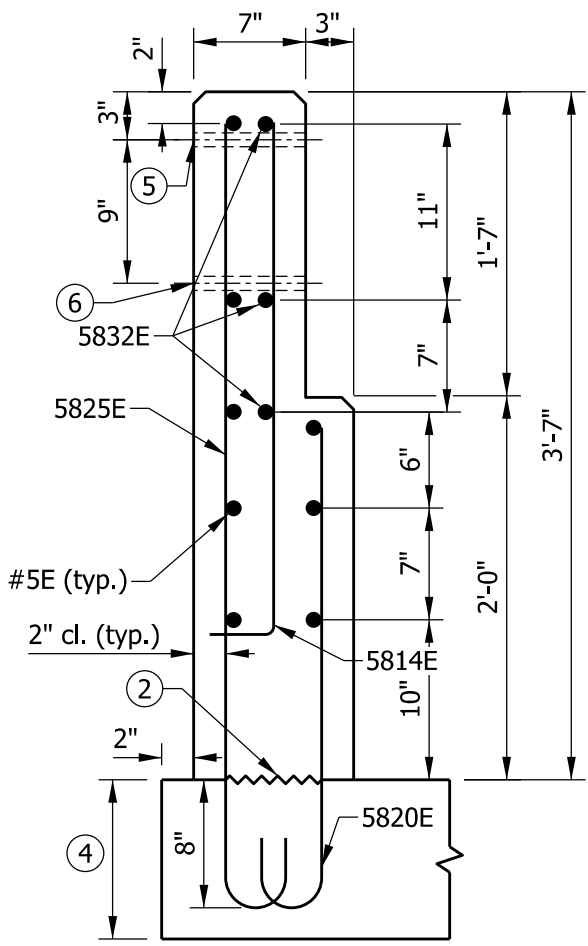
**CONCRETE BRIDGE RAILING TRANSITION, TPF-1 PLAN AND ELEVATION**

SEPTEMBER 2019

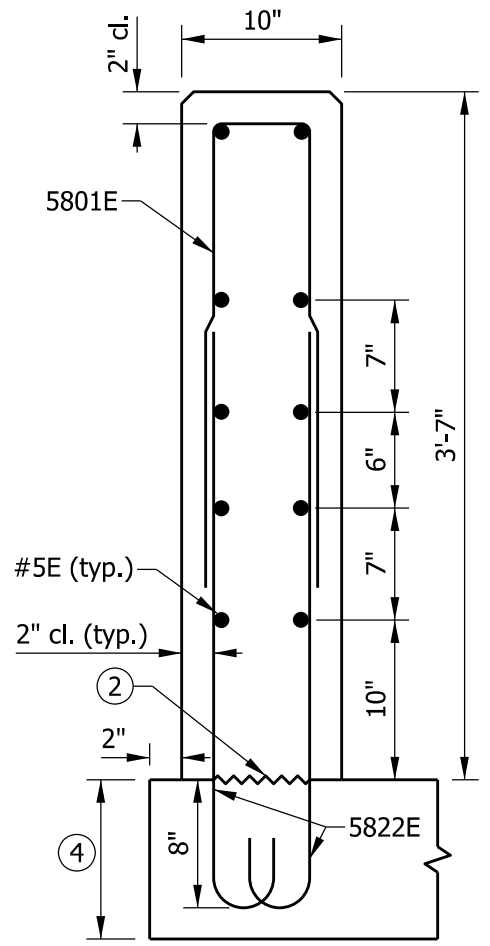
STANDARD DRAWING NO. E 706-TTPP-02



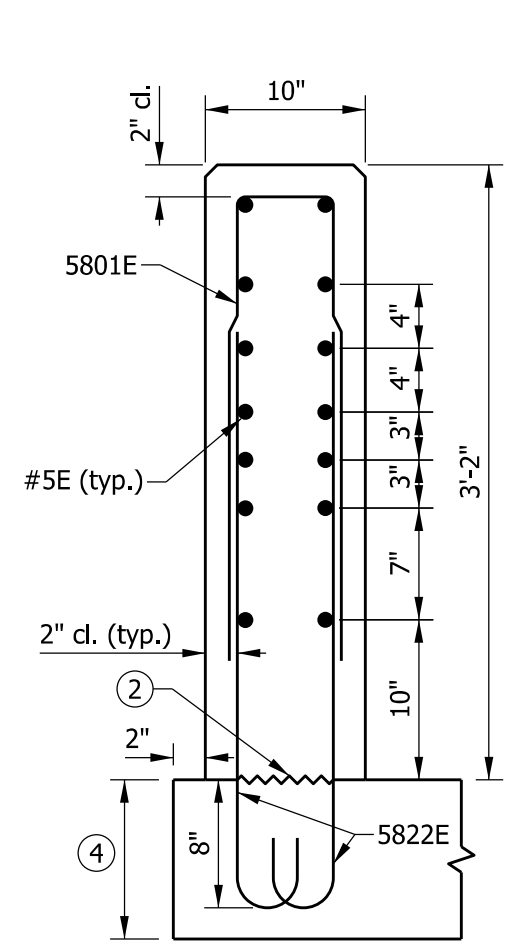
  
 DESIGN STANDARDS ENGINEER 5/2/2019  
 DATE  
  
 CHIEF ENGINEER 6/5/2019  
 DATE



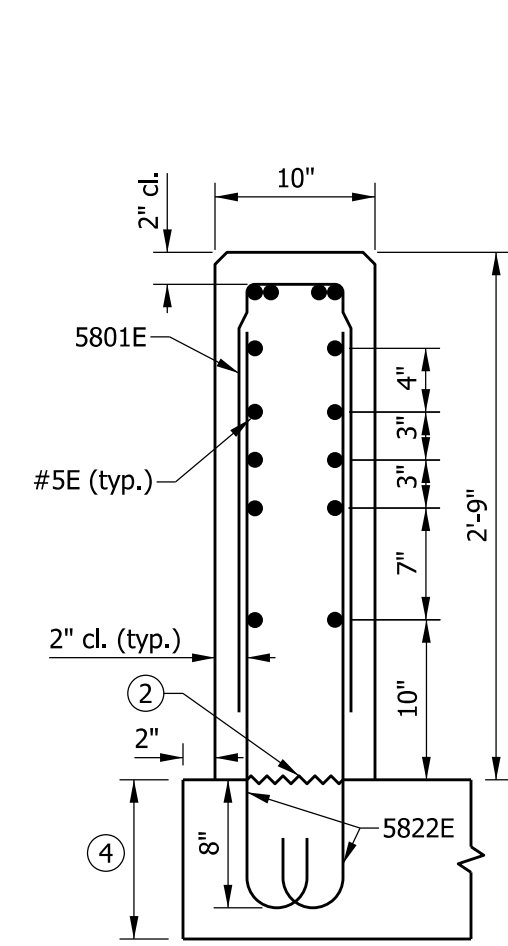
SECTION A-A



SECTION B-B



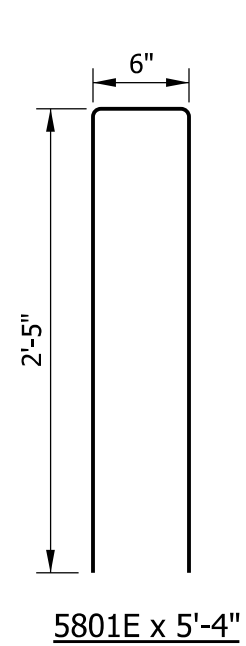
SECTION C-C



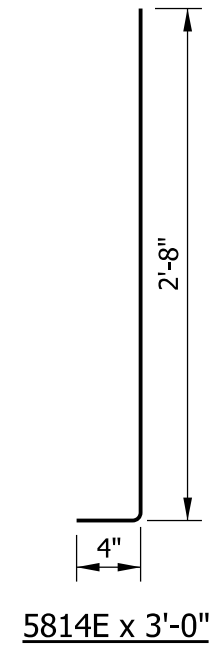
SECTION D-D

**NOTES:**

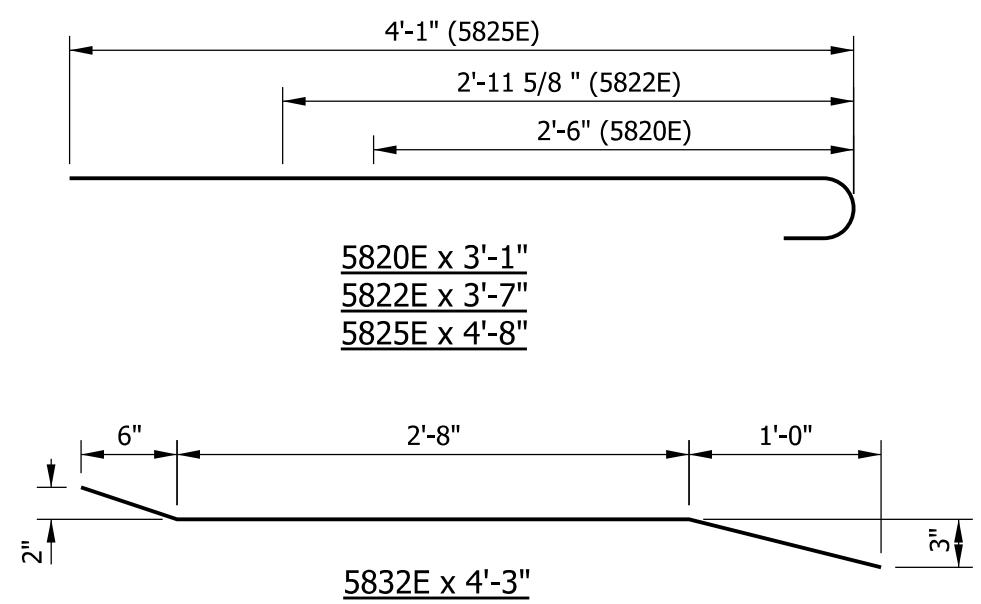
1. All chamfered edges shall be 3/4 in.
- ② Construction joint type A. See Standard Drawing E 702-CJTA-01 for details.
3. See Standard Drawing E 703-BRST-01 for reinforcing-bar bending details and notes.
- ④ RCBA extension for bridge railing transition type TPF-1. See Standard Drawing E 609-TBAE-01 details.
- ⑤ 7/8 in. diameter hole for attachment of steel bridge railing type PF-1, large rail. See Standard Drawing E 706-BRPP-02 for details.
- ⑥ 3/4 in. diameter hole for attachment of steel bridge railing type PF-1, small rail. See Standard Drawing E 706-BRPP-02 for details.



5801E x 5'-4"



5814E x 3'-0"

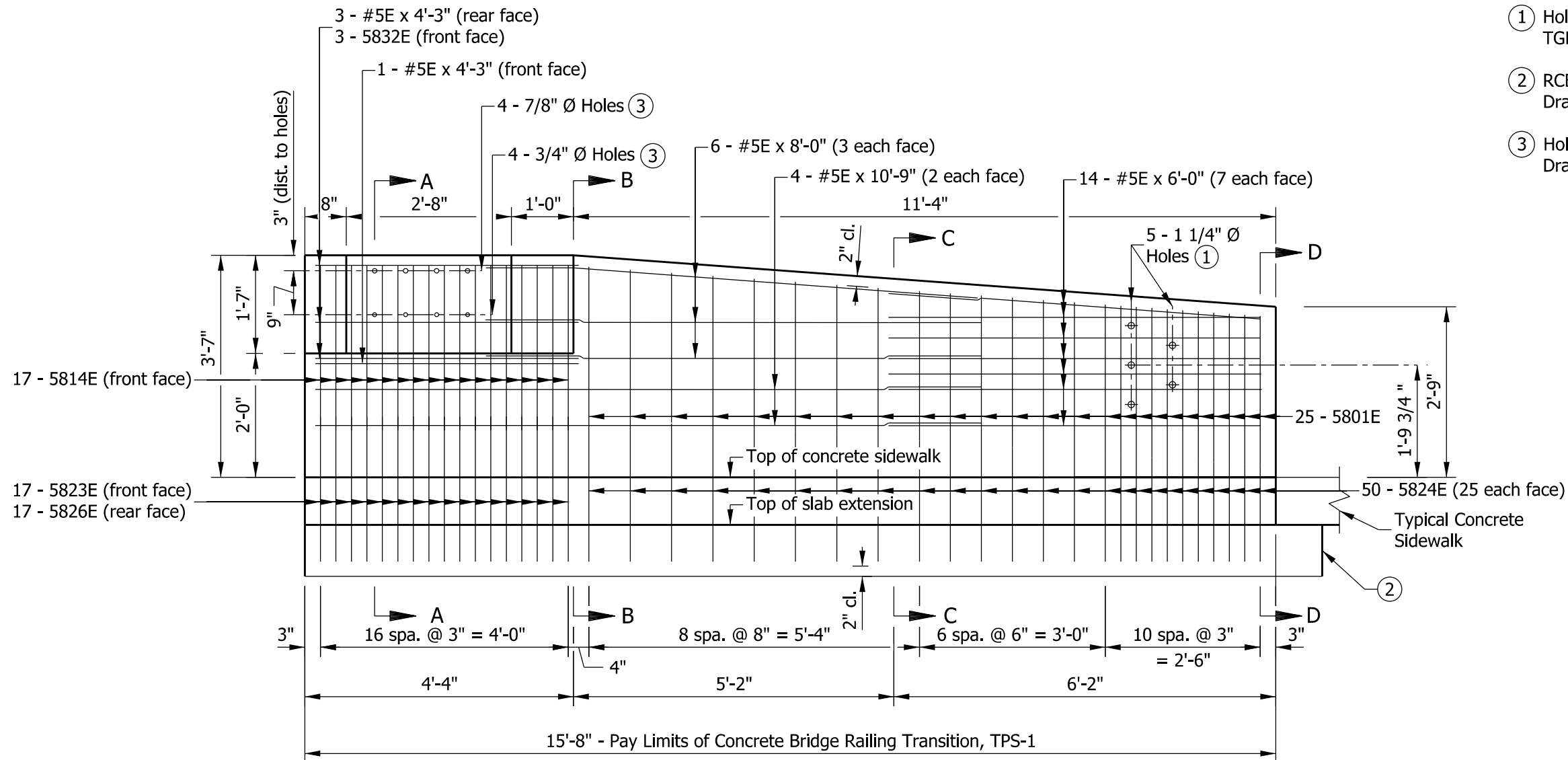


5832E x 4'-3"

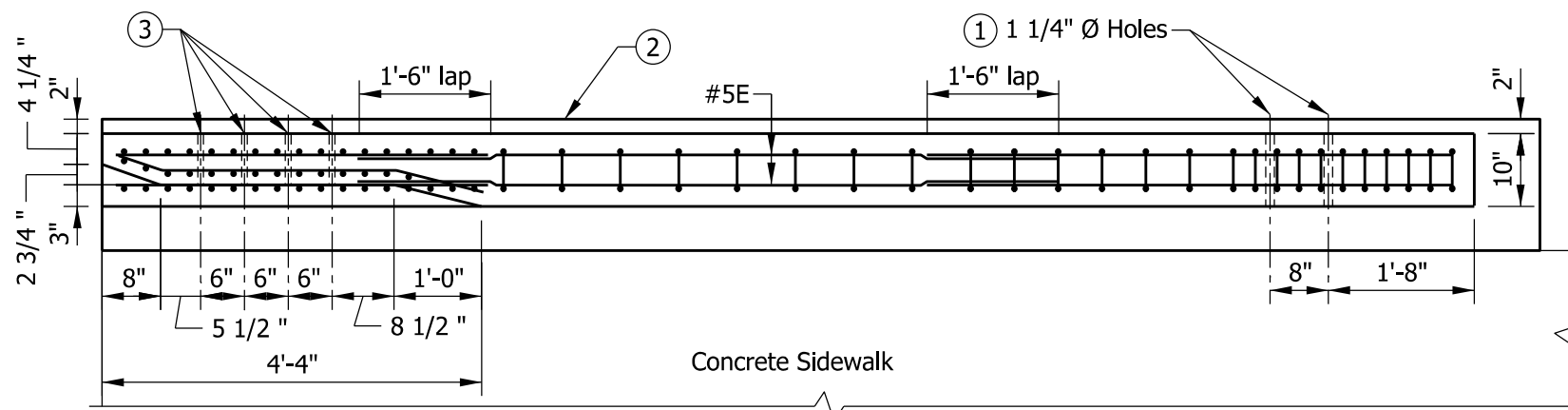
INDIANA DEPARTMENT OF TRANSPORTATION	
CONCRETE BRIDGE RAILING TRANSITION, TPF-1 SECTIONS AND REINFORCING BAR BENDING DETAILS SEPTEMBER 2019	
STANDARD DRAWING NO. E 706-TTPP-03	
	 DESIGN STANDARDS ENGINEER      5/2/2019 DATE
	 CHIEF ENGINEER      6/5/2019 DATE

**NOTES:**

- ① Holes for attachment of guardrail transition, MGS transition, or type TGB. See Standard Drawing E 706-CBRT-04 for details.
- ② RCBA extension for bridge railing transition type TPS-1. See Standard Drawing E 609-TBAE-01 for details.
- ③ Holes for attachment of steel bridge railing type PS-1. See Standard Drawing E 706-BRPP-03 for details.



**ELEVATION**



**PLAN**

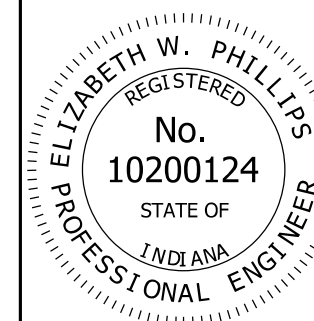
BILL OF MATERIALS			
Quantities are for one concrete bridge railing transition type TPS-1.			
EPOXY COATED REINFORCING BARS			
MARK OR SIZE	NO. OF BARS	LENGTH	WEIGHT
5801E	25	5'-4"	
5814E	17	3'-0"	
5823E	17	3'-9"	
5824E	50	4'-3"	
5826E	17	5'-4"	
5832E	3	4'-3"	
#5E	4	10'-9"	
#5E	6	8'-0"	
#5E	14	6'-0"	
#5E	4	4'-3"	
Total Epoxy Coated Reinforcing Bars			789 LBS
MISCELLANEOUS			
Concrete, Class C			1.9 CYS
Surface Seal			131 SFT



**INDIANA DEPARTMENT OF TRANSPORTATION**

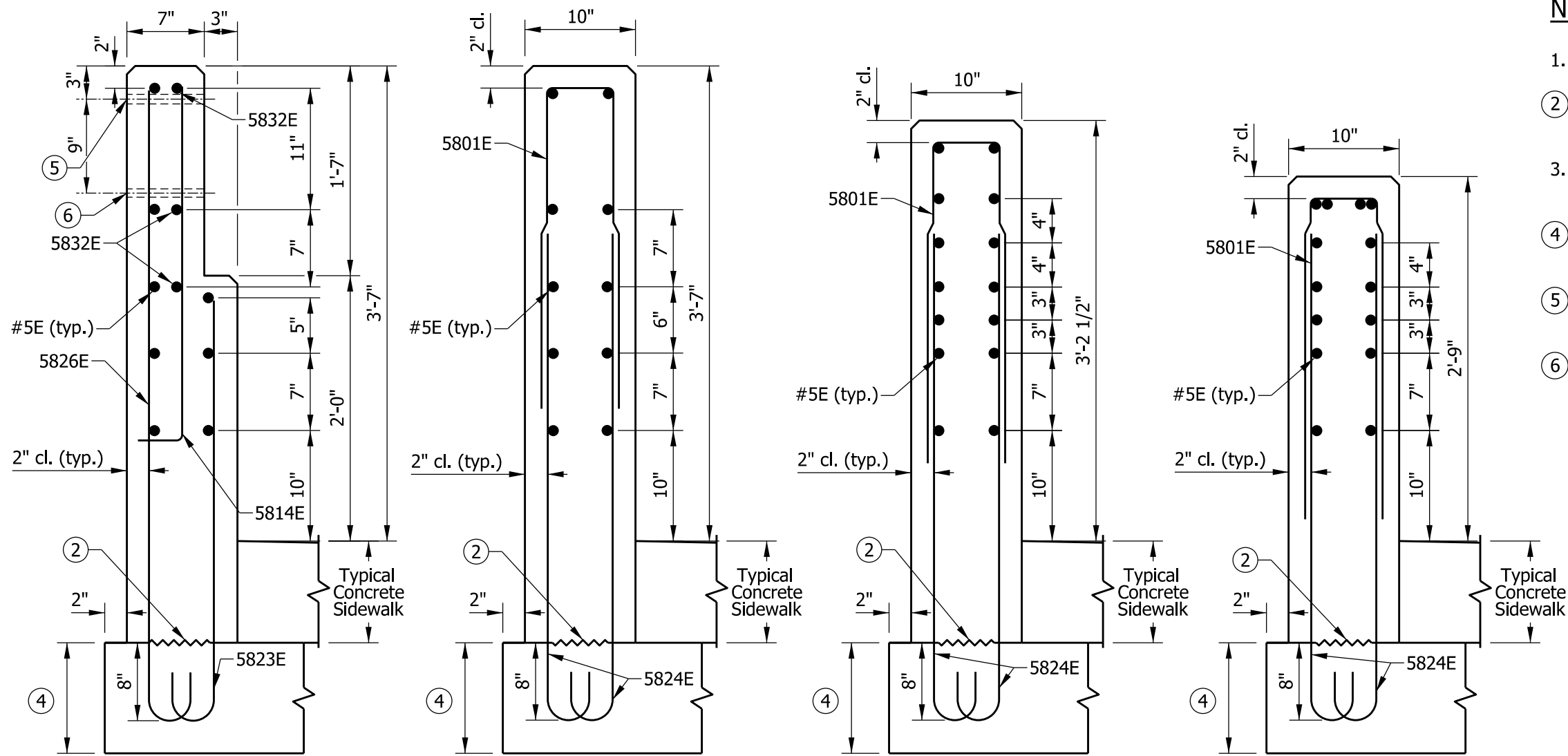
**CONCRETE BRIDGE RAILING TRANSITION, TPS-1 PLAN AND ELEVATION**

SEPTEMBER 2019

STANDARD DRAWING NO. E 706-TTPP-04



  
 DESIGN STANDARDS ENGINEER 5/2/2019  
 DATE  
  
 CHIEF ENGINEER 6/5/2019  
 DATE



**NOTES:**

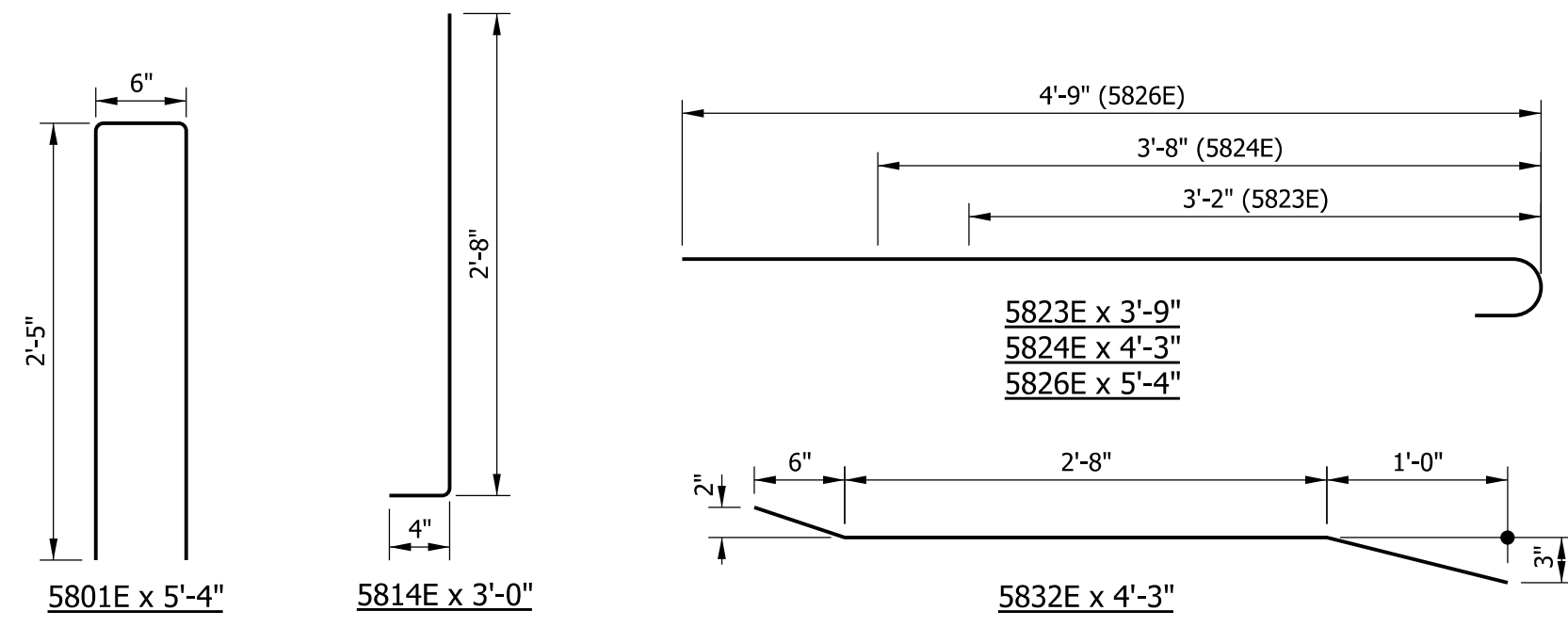
1. All chamfered edges shall be 3/4 in.
- ② Construction joint type A. See Standard Drawing E 702-CJTA-01 for details.
3. See Standard Drawing E 703-BRST-01 for reinforcing-bar bending details and notes.
- ④ RCBA extension for bridge railing transition type TPS-1. See Standard Drawing E 609-TBAE-01 for details.
- ⑤ 7/8 in. diameter hole for attachment of steel bridge railing type PS-1, large rail. See Standard Drawing E 706-BRPP-03 for details.
- ⑥ 3/4 in. diameter hole for attachment of steel bridge railing type PS-1, small rail. See Standard Drawing E 706-BRPP-03 for details.

**SECTION A-A**

**SECTION B-B**

**SECTION C-C**

**SECTION D-D**



<b>INDIANA DEPARTMENT OF TRANSPORTATION</b>	
<b>CONCRETE BRIDGE RAILING TRANSITION, TPS-1 SECTIONS AND REINFORCING BAR BENDING DETAILS</b>	
<b>SEPTEMBER 2019</b>	
<b>STANDARD DRAWING NO.</b>	<b>E 706-TTPP-05</b>
	 <b>DESIGN STANDARDS ENGINEER</b> <b>5/2/2019</b> <b>DATE</b>
 <b>CHIEF ENGINEER</b> <b>6/5/2019</b> <b>DATE</b>	